



MINERVA

AD964MD SATA 3 to CFast Converter Card

Performance & Burn In Test Rev. 1. 0

Table of Contents

1. Overview

2. Performance Measurement Tools and Results

2.1 Test Platform

2.2 Test target and CFast Card

2.3 Install Hardware

2.4 BIOS & Windows 10 OS environment setup

2.5 CrystalDiskMark 6.0.0 x64 performance test

2.6 AS SSD Benchmark 2.0 performance test

2.7 ATTO Disk Benchamrk 3.0.5 performance test

2.8 AnvilBenchmark_V110_B337 Benchmark performance test

3. Burn In Tests and Results

3.1 BurnInTest v8.1 Pro burn in test

4. Summary

AD964MD Converter Card

1. Overview

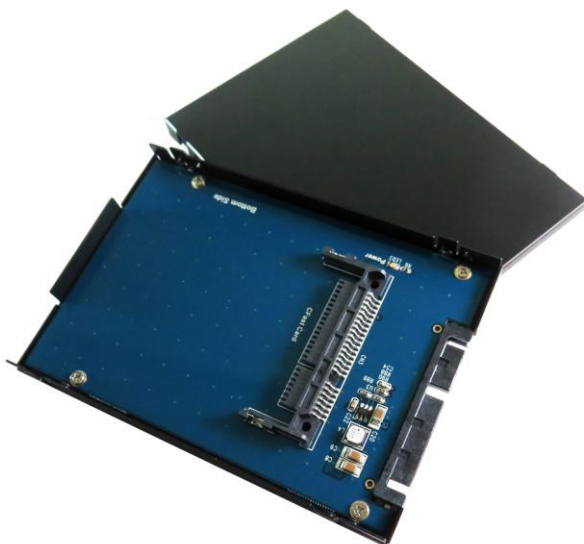
AD964MD adapter, providing CFast connector can be CFast Card converted into SATA III.

2. Tools and Results of Performance Measurement

2.1 Test Platform

M/B : GIGABYTE **Z170X UD5 TH**
CPU : Intel **i5-6500**, 3.2GHz/ 6M Cache/ LGA1150
Memory : Kingston **KVR21N15D8/8**, **DDR4-2133MHz**, **16GB**(8GB DIMM*2)
ATX Power : COOLER MASTER G750M, **750W ATX**, 12V V2.2 Power Supply
Graphic : Z170 Chipsets built-in **HD Graphics 530**
OS : Microsoft **Windows 10 64bit OS**

2.2 Test target: AD964MD adapter with **LEXAR CFast 64GB**



AD964MD Adapter



Lexar 64GB CFast Card

2.3 Install Hardware

Inserts CFast Card into AD964MD converter's CFast connector, and then connect AD964MD converter to SATA port of GIGABYTE **Z170X UD5 TH**

2.4 BIOS & Windows 10 OS environment setup

2.4.1 Primary Drive installs Windows 10 64bit OS

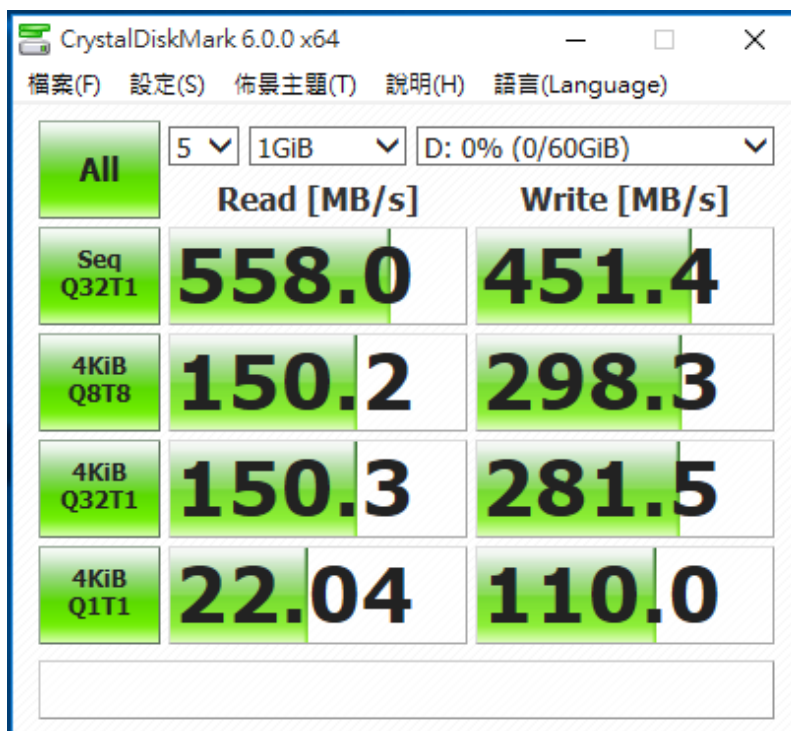
2.4.2 Secondary Drive formats CFast Card into NTFS, don't install any application.

AD964MD Converter Card

2.5 CrystalDiskMark 6.0.0 x64 performance test

※Benchmark (Sequential **Read & Write** / default = **1MB**)

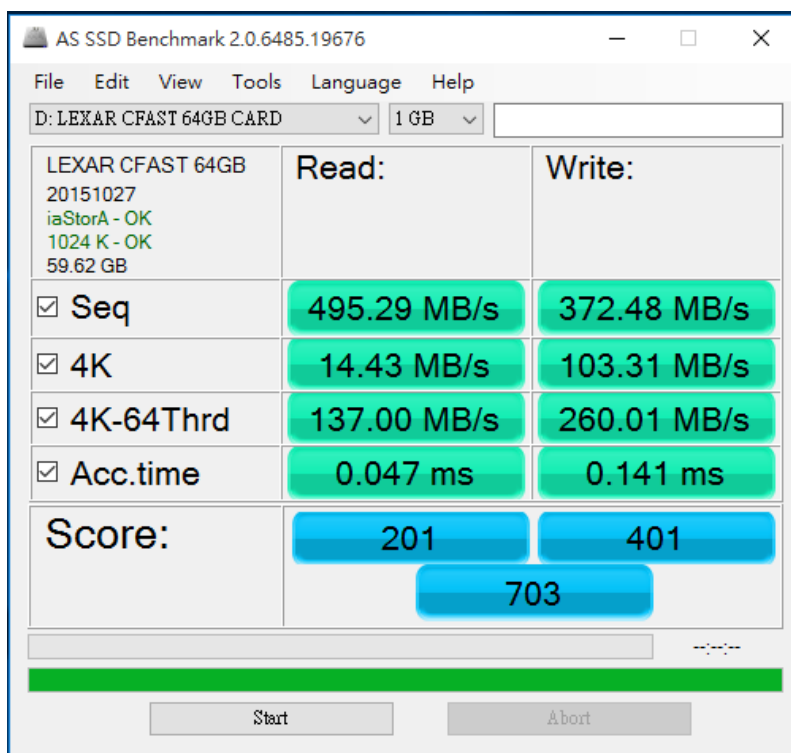
2.5.1 Shows **CFast 64GB** performance as below:



2.6 AS SSD Benchmark 2.0 performance test

※Benchmark (**Read & Write** by MB/s, default block size = **16MB**)

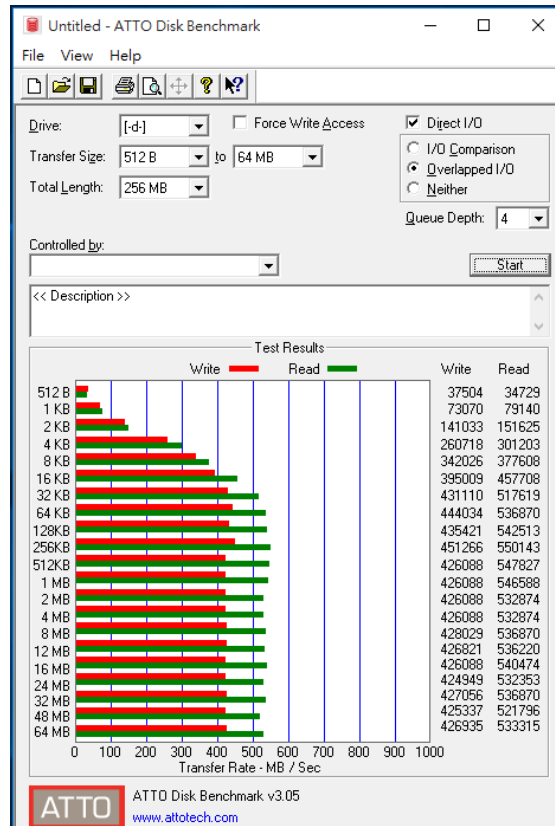
2.6.1 Shows **CFast 64GB** performance as below:



AD964MD Converter Card

2.7 ATTO Disk Benchmark 3.0.5 performance test

2.7.1 Shows **CFast 64GB** performance as below:



2.8 AnvilBenchmark_V110_B337

2.8.1 Shows **CFast 64GB** performance as below:

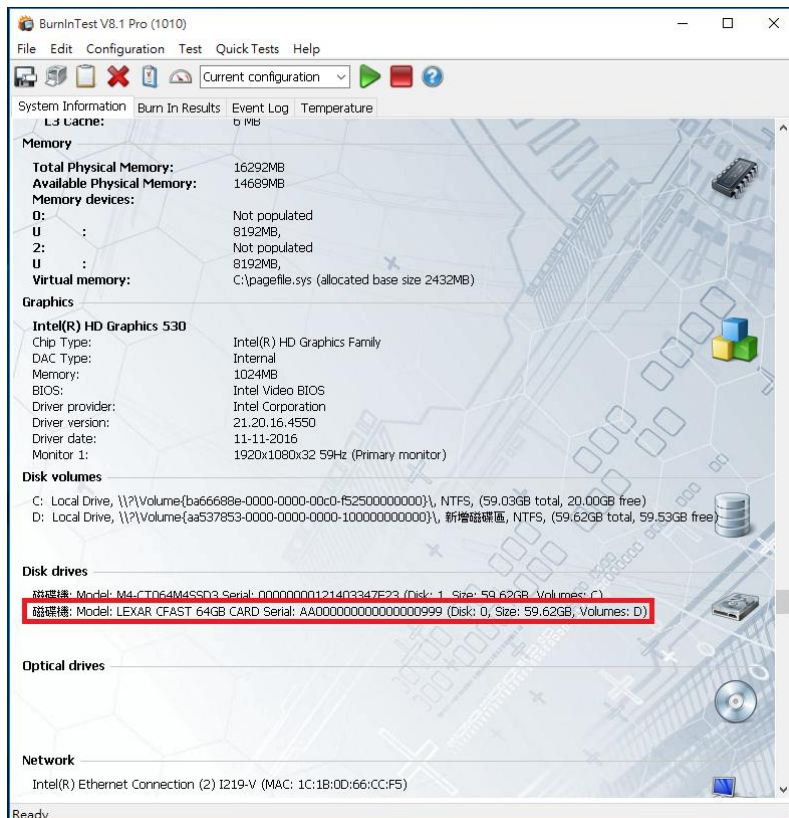
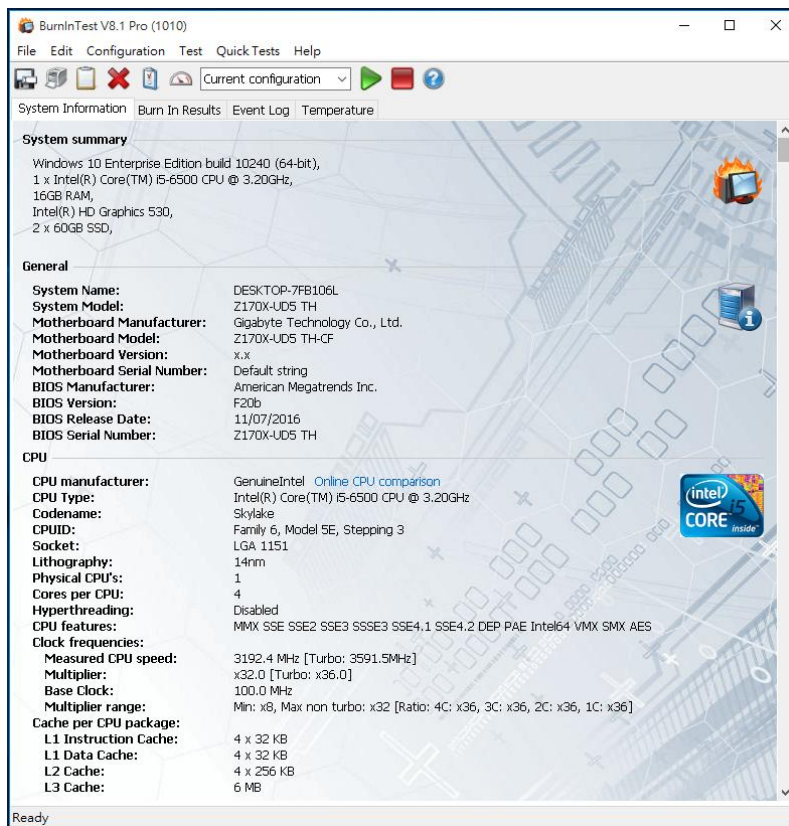


AD964MD Converter Card

3. Burn In Tests and Results

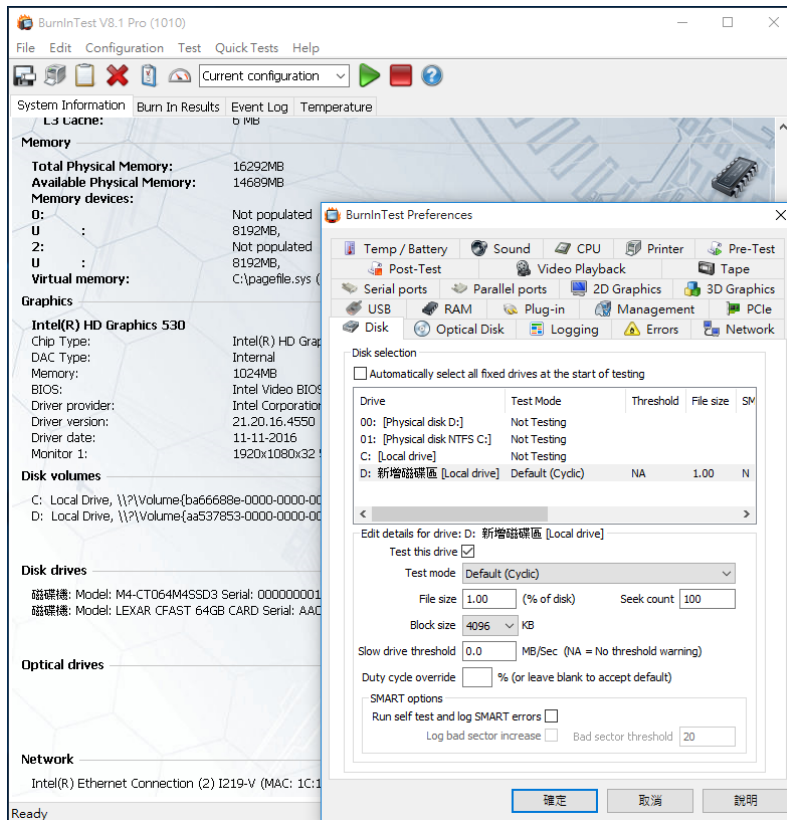
3.1 BurnInTest v8.1 Pro

3.1.1 System information for **CFast 64GB** as below:

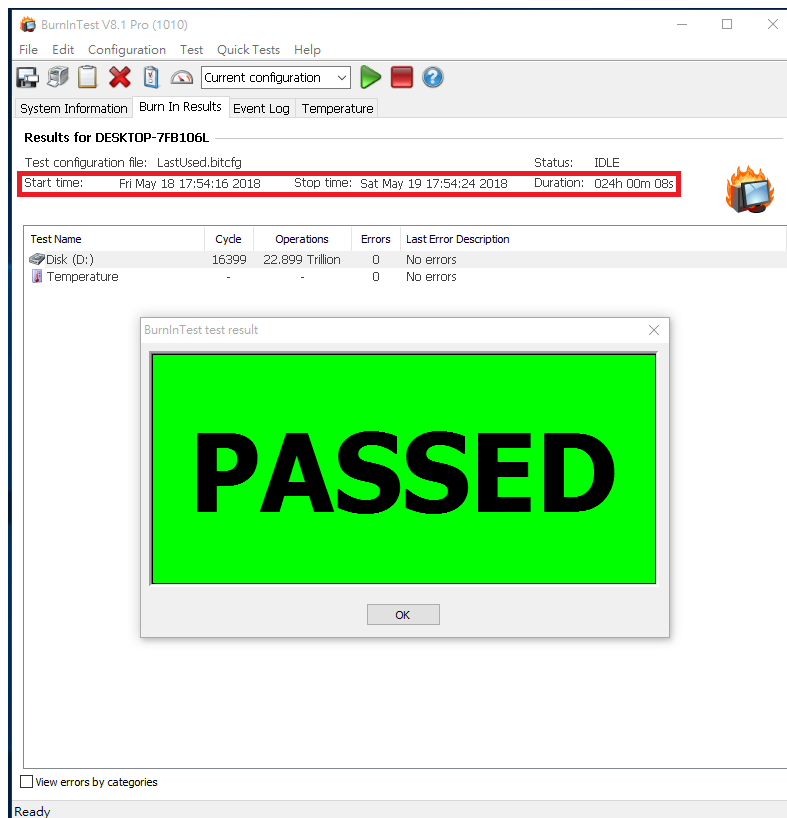


AD964MD Converter Card

3.2.1 Shows Disk test mode(10 ways cycle test)



3.2.3 Shows 24-hour Burn-in test PASSED



AD964MD Converter Card

4. Summary

- 4.1 CFast Card is SATA 3 Interface, I/O speed, max. to 6Gbps.
- 4.2 AD964MD adapter I/O performance is based on CFast Card Card.